



"EARLY CHILDHOOD SERVICES"



IMPORTANT ADDRESSES

Who?	Does what?	Telephone
Police		117
Fire brigade		118
Paramedics		144
"Dargebotene Hand"	Help line	143
Toxicological Information Centre	Help in cases of poisoning	145
Thusis Hospital	Accident and Emergency Main number	081 632 12 60 081 632 11 11
Paediatric practice Feldstrasse	Group practice for paediatric and adolescent medicine	081 651 30 32
Municipality of Thusis	Council offices	081 650 09 30
School office	Kindergarten registrations	081 630 05 17
Mittelbünden Regional Social Services	Social counselling	081 257 52 75
Child and Adult Protection Authority KESB	Provision of support to individuals requiring protection	081 257 52 90
Adebar	Advice on birth control and sexuality	081 250 34 38
Parents' emergency help line	Telephone counselling	0848 35 45 55
GR Women's Refuge	Refuge	081 252 38 02
GR Victims' Aid	Advice and help	081 257 31 50

KITZ



Day care centre

Childcare
from 3 months to starting school

Opening hours
Monday to Friday 06.15 – 19.00.

Fees are income-related
CHF 40 – CHF 120 per day.

Kita kitz
Rosenrollweg 12, 7430 Thusis

Tel. 081 651 02 23
kitz@fanevi.ch
www.fanevi.ch/kitz



PINOCCHIO



Childcare

Childcare for children
from 3 years to the end of primary school.

Flexible childcare as required and agreed in advance.

Lunch provided.

Opening hours
From 06.30 – 19.00.

Pinocchio
Untere Stallstrasse 2, 7430 Thusis

Tel. 077 429 05 77
pinocchio@fanevi.ch
www.fanevi.ch/pinocchio



PURZELBAUM



Play group

Games and play for children in a similar age group.

Your child will be accompanied and assisted on his or her journey to becoming more independent – in a protected environment and while playing.

Opening hours
Monday, Tuesday, Wednesday, Friday 09.00 – 11.00 during school term time.

Fees for weekly participation, per semester
CHF 295

Purzelbaum
Obere Stallstrasse 10, 7430 Thusis

Tel. 077 400 22 20
purzelbaum@fanevi.ch
www.fanevi.ch/purzelbaum



PARENTS' ADVICE CENTRE

Thusis Hospital



The parents' advice centre
is a family support service and the first port of call for issues relating to early childhood support from birth to five years.

Appointments
Home visits; advice at the advice centre; telephone advice; online advice.

Monday to Friday by appointment.

Advice to parents is provided free of charge and is voluntary and confidential.

Further information and contact details at:

bit.ly/41niMnP



CHILDREN'S CRÈCHE PLUS LANGUAGE

St. Catharina, Cazis

Early language support for children aged from 2 to 5 years whose first language is not German

Our successful "Lernpfad" holistic support programme prepares children for kindergarten, introducing them to German in a playful way. This helps them integrate better and improves their prospects of being successful at school.

Course days and times
Tuesday, Wednesday, Thursday, Friday from 09.15 – 15.40
Joint lesson for parents and children from 09.15 – 09.55

Fees
CHF 300 per semester
(CHF 750 without contribution from the municipality)

Schule St. Catharina
St. Martin 3, 7408 Cazis

Tel. 081 632 10 00
schulleitung@stcatharina.ch
www.stcatharina.ch



Schule
St. Catharina

GERMAN FOR SCHOOL / PING-PONG



German for school
The municipality of Thusis offers an early language support programme for children who only speak limited German before they enter kindergarten.
The programme is run by the children's crèche plus language at St. Catharina school (see the page on the left!):

www.thusis.ch/schule/fruehe-kindheit



ping-pong
Parents attend 8 sessions focusing on how they can support and promote their child's overall development in a playful way. They can also discuss current parenting topics. The first session takes place with the children; childcare is provided for the second session.

Fees
The offering is free and funded by the municipality.
Programme director:

Schulstrasse 8, 7430 Thusis
Tel. 079 428 79 32
deutschschule@schule-thusis.ch



OFFENE VIAMALA



Asylum association

We provide a place for families, refugees, migrants and Swiss people Swiss nationals to meet each other.

Opening hours
Twice a month, Thursdays from 14.00 - 16.30.

Meeting location
Jugendraum Glais 18, Compognastrasse 13 in Thusis.

The meetings are free.

No prior registration is required.

Information:

info@offeneviamala.ch
www.offeneviamala.ch



ELKI GYMNASTICS



Tv Thusis

Gymnastics for mothers or fathers and their children aged from 3 to 5 years.

The varied gymnastics sessions stimulate and encourage children's enjoyment of physical activity.

Gymnastics sessions
Thursday, 09.30 - 10.30

Mehrweckhalle Thusis, Schulanlage Dorf

Fees
CHF 70 per school year

Information:

elki@tv-thusis.ch
www.tv-thusis.ch/muki-turnen



THISIS TODDLERS' MOVEMENT GROUP

Thusis

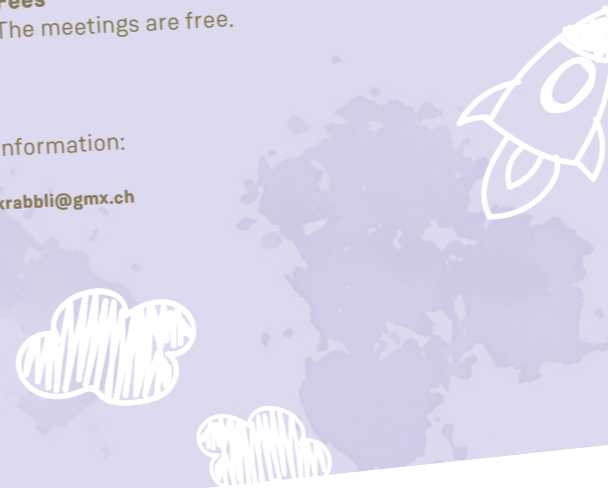
The toddlers' movement group is a place for mothers and/or fathers and their children aged from 0 to 3 years to meet, play and do gymnastics.

When and where
We meet every Wednesday morning from 09.30 - 10.30 in the autumn/winter season in Thusis Multipurpose Hall.

Fees
The meetings are free.

Information:

krabbli@gmx.ch



FOREST PLAY GROUP



Municipality of Thusis

Forest play group for children aged 3-4 years
Getting dirty; being outside in all weathers; climbing; playing; watching animals and getting warm by the fire - spending time in Nature provides children with many different experiences and promotes their development.

Nature encourages children to explore, discover and use all their senses. Knowledgeable adults accompany children at the forest play group.

The forest play group meets every Wednesday from 8.45 to 11.15.

The forest sofa is located in the larch forest above Thusis. There is an annual fee of CHF 690 to take part in a forest play group.

Naturschule Woniya
Dalas 27, 7425 Masein

Tel. 081 630 06 18
info@naturschule-woniya.ch
www.naturschule-woniya.ch/angebote/waldspielgruppe



CHILDCARE AT HOME

KBH



Childcare service for children aged up to 12 years.

The SRK's childcare staff can help if families need short-term childcare - for example because of illness; an accident or parents are overloaded.

Care times by agreement Mon. to Fri. 08.00 - 11.30 and 14.00 - 16.30 (Fri - 16.00).

SRK Graubünden
Steinbockstrasse 2, 7000 Chur

Fees are income-related. See website:

Tel. 081 258 45 84
info@srk-gr.ch
bit.ly/3I3Mg2Z



THERAPEUTIC EARLY EDUCATION

Heilpädagogischer Dienst Graubünden

Problems
• Disabilities
• Delayed development
• Risks to development
• Behavioural problems

Offering
• Differentiated developmental psychological clarification
• Assessment of support required
• Promotion and support of child development
• Advice regarding specific aids/methods
• Interdisciplinary cooperation
• Coordination of the carer system
• Advice and support for parents/guardians and specialist staff
• Advice regarding starting school

Therapy by appointment, not during school holidays

Funding body
Department of Primary Education and Sport

Heilpädagogischer Dienst GR
Neudorfstr. 69, 7430 Thusis

Tel. 081 257 02 80 (Main office)
Tel. 081 651 56 58 (Thusis local office)
info@hpd-gr.ch
www.hpd-gr.ch



SPEECH THERAPY FOR PRE-SCHOOLERS

Heilpädagogischer Dienst Graubünden

Problems
• Speech comprehension
• Pronunciation
• Formation of words/sentences, grammar, vocabulary
• Communication, stuttering, refusal to speak
• Voice

• Perception functions
• Mouth motor activity, salivation

Offering
• Clarification, diagnosis of child's speech development status at all linguistic levels
• Provision of a speech therapy-related diagnosis
• Provision of speech therapy
• Advice and support for parents/guardians

Therapy by appointment, not during school holidays

Funding body
Department of Primary Education and Sport

Heilpädagogischer Dienst GR
Neudorfstr. 69, 7430 Thusis

Tel. 081 257 02 80 (Main office)
Tel. 079 221 67 72 (Speech therapy for Viamala region)
info@hpd-gr.ch
www.hpd-gr.ch

SUPPORT FOR SIGHT AND HEARING IMPAIRMENTS

Heilpädagogischer Dienst Graubünden

Problems
• Sight/hearing impairment
• A sight/hearing impairment has been medically diagnosed

Offering
• Clarification
• Tailored support measures
• Advice and support on using technical aids
• Advice and support for the child, parents/guardians and specialist staff

Therapy by appointment, not during school holidays

Funding body
Department of Primary Education and Sport

Further HPD GR offering
PSYCHOMOTOR ACTIVITY THERAPY for pre-schoolers (Private payment)

Heilpädagogischer Dienst GR
Aquasanastr. 12, 7000 Chur

Tel. 081 257 02 80 (Main office)
info@hpd-gr.ch
www.hpd-gr.ch

